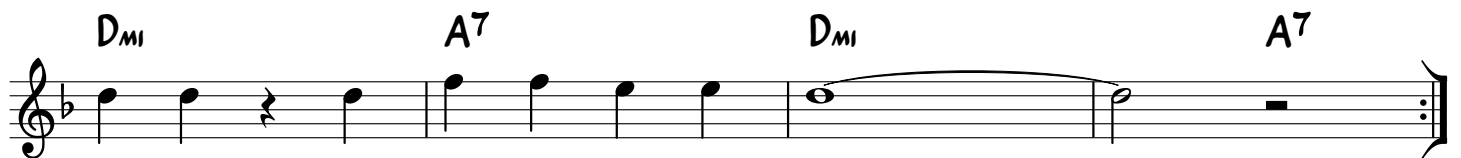
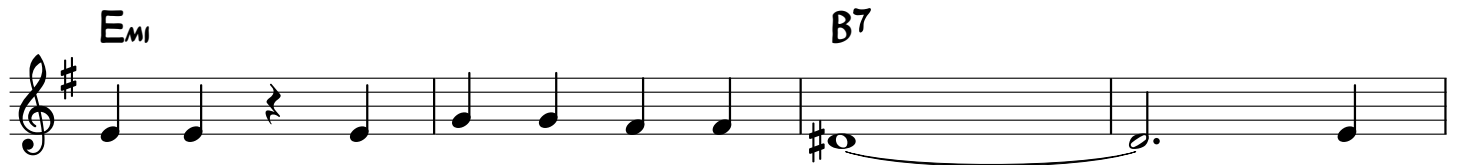


# Satan Your Kingdom Must Come Down



# Satan Your Kingdom Must Come Down (Bb)



# Satan Your Kingdom Must Come Down (Eb)

**B<sub>m1</sub>**

**B<sub>m1</sub> F#7**

**B<sub>m1</sub> E<sub>m1</sub> F#7#5 B<sub>m1</sub>**

**B<sub>m1</sub> F#7 B<sub>m1</sub> F#7**

# Satan Your Kingdom

$D_{MI}$	$D_{MI}$	$D_{MI}$	$D_{MI}$
$D_{MI}$	$D_{MI}$	$A^7$	$A^7$
$D_{MI}$	$D_{MI}$	$G_{MI} A^7$	$D_{MI}$
$D_{MI}$	$A^7$	$D_{MI}$	$A^7$

# Satan Your Kingdom Must Come Down

Satan your kingdom must come down  
Satan your kingdom must come down  
You've been ruling your evil all over this town  
Satan your kingdom must come down

We gonna moan 'til your kingdom comes down  
We gonna moan 'til your kingdom comes down  
You've been ruling your evil all over this town  
Satan, your kingdom must come down

We gonna sing 'til your kingdom comes down  
We gonna sing 'til your kingdom comes down  
You've been ruling your evil all over this town  
Satan, your kingdom must come down