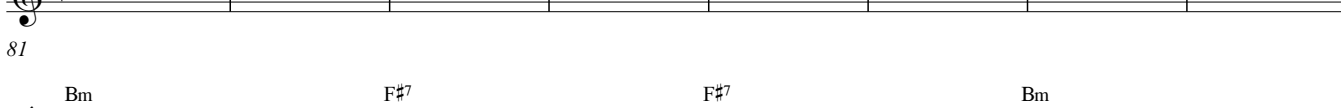
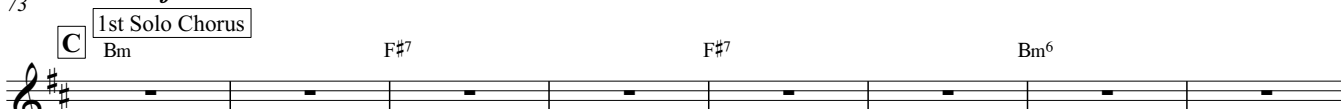
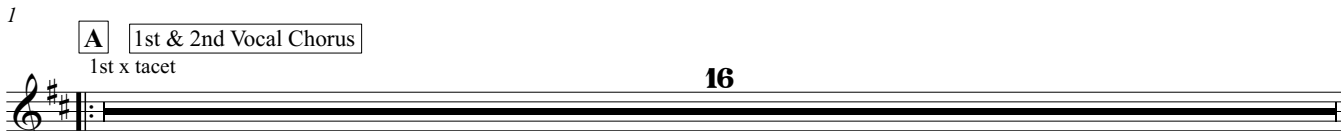


# Comes Love

Lew Brown  
Arr. Steffen Kistner

Swing ♩ = 180

8



Bm F#7 F#7 Bm

105 *mf*

Detailed description: Musical staff for measures 105-112. Chords: Bm, F#7, F#7, Bm. Dynamics: *mf*.

**D** 2nd Solo Chorus

Bm F#7 F#7 Bm

113

Detailed description: Musical staff for measures 113-120. Section: 2nd Solo Chorus. Chords: Bm, F#7, F#7, Bm.

Bm F#7 F#7 Bm

121

Detailed description: Musical staff for measures 121-128. Chords: Bm, F#7, F#7, Bm.

B7 Em6 A7 D6 F#7

129 *mf*

Detailed description: Musical staff for measures 129-136. Chords: B7, Em6, A7, D6, F#7. Dynamics: *mf*.

Bm F#7 F#7 Bm

137

Detailed description: Musical staff for measures 137-144. Chords: Bm, F#7, F#7, Bm.

**E** Tradings Horns, Drums & Bass

*ff*

145 *ff*

Detailed description: Musical staff for measures 145-152. Section: Tradings Horns, Drums & Bass. Dynamics: *ff*. Includes a triplet of eighth notes.

153 *mf*

Detailed description: Musical staff for measures 153-160. Dynamics: *mf*. Includes a double bar line with a '2' above it.

161 *f*

Detailed description: Musical staff for measures 161-168. Dynamics: *f*. Includes a sixteenth rest and a double bar line with a '4' above it.

**F** Head Out Vocals

16

177

Detailed description: Musical staff for measures 177-192. Section: Head Out Vocals. Measure 177 is a whole rest for 16 measures.

193

Detailed description: Musical staff for measures 193-200.

201

Detailed description: Musical staff for measures 201-206.

207

Detailed description: Musical staff for measures 207-214. Includes first and second endings with repeat signs.